



# Wiot Gateway

Model: WG2100CT

The WIOT Gateway is a state-of-the-art vehicle tracking, monitoring and reporting device designed for managing vehicle fleets. The gateway has onboard GPS and advanced sensor management capabilities.

## KEY FEATURES

- Wireless Communication with Wifi/hotspot, GSM network, 3G/4G LTE and Bluetooth.
- Communication Interfaces for HDMI, USB, RS485 and RS232
- Identity, attendance and gate management capabilities through on-board RFID
- High-precision location-based tracking with on-board GPS
- Wireless/Wired Sensor Management & Integration with onboard temperature/humidity, fire/smoke, door open/close, IR motion detection and vehicle sensors for Tire Pressure, Engine, AC, etc.
- SOS emergency event alarm
- Driver behavior detection and alerts
- On-Board Diagnostics (OBD) interface for general alerting, e.g., engine, battery, radiator, tire, air conditioning, etc.

## SOFTWARE OVERVIEW

The WIOT Gateway is part of the larger WIOT Fleet Management Solution. The WIOT Fleet Management Solution is designed to handle large vehicle fleets from order fulfillment, to route scheduling, to dispatching drivers, and the way to fleet cost reduction. Here is an overview of the key features of the Fleet Management Solution.

- Real-time Dashboard of vehicles, including alerts and notification on individual vehicles
- Management of Vehicles, Drivers, and Stations/Depots

## USE CASES

Given the features of the WIOT Gateway, there are many potential real-life use cases that can easily be executed based on the onboard capabilities of the gateway.

### Sensor Management

Ensure safety of vehicle passengers and precious cargo

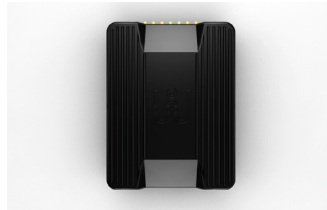
### GPS and G-Sensor

- Driver behavior detection and alerts
- Geo-Fencing restrictions capability for vehicles

### RFID/NFC

ID card or mobile phone-based attendance management and tracking

- Vehicle Route Planning and Optimization
- Vehicle Dispatching and Telematics
- Vehicle Service, Maintenance & Cost Reports
- Cost Optimization Plan
- Driver Behavior and Performance Reports
- Fleet Analytics Reporting Dashboard



## TECHNICAL SPECIFICATION

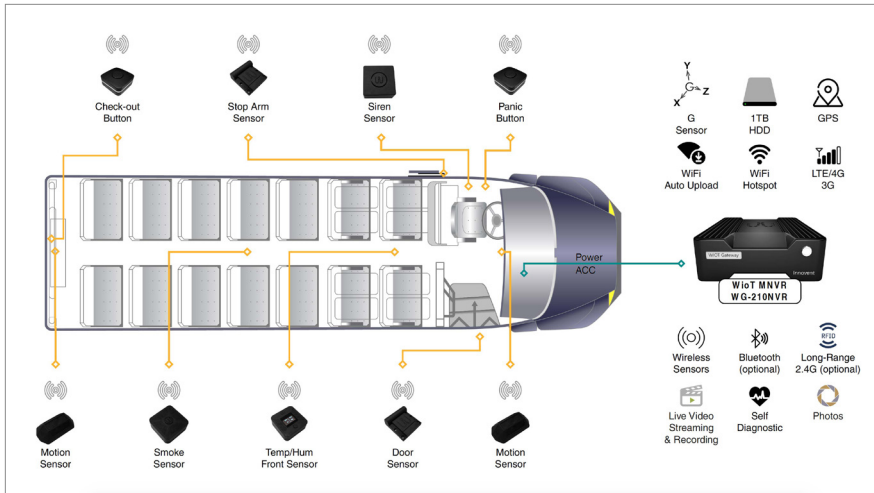
WIRELESS CONNECTIVITY	
WiFi/Hotspot	Support
Wireless 433	Support
Internet	4G full Netcom
Bluetooth	Support

SWITCHES / INTERFACES	
OFF/ON	Power switch
Analog detection interface	2 detection voltage value DC0-12V
Voice intercom	Two-way voice intercom
Status Indicator	Three-color running status light
RS485	1
RS232	2 RS232 level
USB	1 usb2.0
PWR/ACC/OIL	Remote oil circuit cutoff, ignition control
RFID	Support

POWER SUPPLY	
Power supply anti-verse connection maximum protection voltage	-DC 36V
Power input interface voltage value	DC 9V-36V
ACC Interface voltage	DC 9V-36V

DATA INPUTS	
Positioning	Support GPS and Beidou
OBD / CAN bus / diagnostics interface	OBD Interface CAN bus interface - Support 2
I/O Port	4 inputs

ENCLOSURE	
Device dimension	246*190*65mm
Shell material	Aluminum alloy
Working temperature	-20°C-85°C
Device storage temperature	25°C-105°C
Max. Humidity	5% ~ 95% (No frost)
Remote upgrade	Support



**DEPLOYMENT ILLUSTRATION**

Sensors, Cameras, Display, and Cabling are not included with the WIOT Gateway.

**IN NORTH AMERICA**

**+1 (289) 409-9692**

2233 Argentia Road  
Suite #302, East Tower  
Mississauga, Ontario L5N 6A6  
Canada

**IN MENA**

**+1 (289) 409-9692**

(Middle East & North Africa)  
Post Production Media Building  
Suite #504A, Ministries Complex  
P.O.Box 769433, Abu Dhabi, UAE

**SUPPORT**

Bring Wiot to your Business

[contact@innoventintegrated.com](mailto:contact@innoventintegrated.com)

[www.wiotbox.com](http://www.wiotbox.com)